



THE GLOBAL LEADING COMPANY
CHALLENGE & INNOVATION

MIRAE INDUSTRIES

Company Introduction

www.miraewinch.com

GENERAL

Company Name	MIRAE INDUSTRIES CO., LTD
CEO	Kang, Jong-Soo
Location	KYUNGNAM HAMAN CHILSEO INDUSTRIAL COMPLEX
Contact No.	TEL : 055) 587 – 8520 / FAX : 055) 587 – 8549
Business Field	SHIPBUILDING & MARINE Industry(Deck Machinery, Offshore Equipment)
Established	2005
Employee	87 (Aug. 2019)
Business No.	608 – 81 – 64957
Webpage	Http://www.miraewinch.com

CERTIFICATION & APPROVAL

APPROVAL	<ul style="list-style-type: none"> • ISO 9001/14001 • OHSAS 18001 • Certificate for venture business • Certificate of R&D center • ASME certificate(S) & (U) • Class approval(KR, ABS, DNV, GL etc.)
PATENT (10)	<ul style="list-style-type: none"> • Rope drum (10-1289779) • Fairleader Chain stopper (10-1184248) • Universal Fairleader (10-1181219) • Chain stopper 2009 (10-0918662) • Chain stopper 2011 (10-1178757) • Pull-in winch system (10-1455296) • Hyd. Power unit of Pull in winch system (10-1548733)

HISTORY



<Main office & 1st Factory>



<R&D center & 2nd Factory>

- 2005 . 03 : Established Mirae Industry
- 2007 . 01 : Registered SHI, DSME, HHI, HSHI co-operation
ISO 9001(KR)
- 2007 . 10 : WPS Certificate by GL,BV,KR,LR,ABS,RINA
- 2008 . 04 : Supplied 3,600 TONS
OFFSHORE FLOATING CRANE WINCH (DSME-G007)
- 2008 . 06 : ISO14001 & OHSAS 18001
- 2009 . 01 : Korea's 1st developed and supplied Offshore winch (DSME-H5906)
- 2009 . 09 : Chain stopper patent Developed FPSO ANCHORING WINCH with government
- 2009 . 10 : Carried out Mobile Harbor Project(KAIST, KMOU) Developed and Supplied Offshore winch
- 2009 . 11 : Export award \$20 million
- 2010 . 01 : Contract Flood gate winch supply and engineering -POSCO Plantech
- 2010 . 05 : 2nd factory (Mirae-Hywin)
- 2010 . 09 : Award from president development of the field for economies
- 2011 . 12 : Export award from Gyeongsang-namdo
- 2012 . 02 : R&D center
- 2012 . 03 : Award tax payer faithful (Haman-Gun)
- 2013 . 02 : Korea Maritime University Cooperation certified family company
- 2015 . 04 : 400TON PULL IN WINCH completed development and trial performance

BUSINESS STATUS

- * New building in Korean Market (2018)
 - HHI, DSME, SHI and Etc

Division	Q'ty	Unit	Remark
Total new building Project	263	Vessels	-
Mirae's New order	66	Vessels	-
Market share	25%		

- Mirae have 25% of Market share in Korean market (2018)

- Actually, Mirae almost got the large and middle size of vessel's contract in 2018 so that the total amount portion is 35% in Korean market.

- * Mirae's total sales (2019/2020)

Division	2019	2020	Remark
Mirae	\$ 34,200,000	\$ 30,700,000	-

- Mirae included all of Korean shipyard's deck Machinery standard maker list. (HHI, DSME, SHI and other shipyards)

- Mirae is the No.1 leading player in Korean market. Also, Mirae is expanding the overseas market such as China, Japan, U.S.A and the other countries.

MIRAE REFERENCE

MIRAE INDUSTRIES REFERENCE

CONTAINER

SHIPYARD	HULL NO.	SHIP	TYPE	VESSEL
HHI	3024	14,300TEU	ELEC.	13
HHI	S581	4,500TEU	ELEC.	3
DSME	H4290	10,100TEU	ELEC.	6
DSME	4318	23,000TEU	ELEC.	7
SHI	SN2288	23,000TEU	ELEC.	5
SAMJIN	H4001	4,700TEU	ELEC.	2
SSME	H4028	3,600TEU	ELEC.	4
DMHI	H4091	8600TEU	ELEC.	4
DAESUN	SB594	1,800TEU	HYD.	3
HSHI	S887	7.5K RORO	ELEC.	4
TOTAL				51

ETC

SHIPYARD	HULL NO.	SHIP	TYPE	VESSEL
HHI	P161	NAVY	HYD.	1
DSME	H3609	DRILL SHIP	HYD.	2
DSME	G007	FLOATING CRANE	HYD.	1
DSME	H3028	SEMI-RIG	ELEC.	1
DSME	H3412	SEMI-RIG	ELEC.	1
DSME	H3401	PIPE LAYING VESSEL	HYD.	3
DSME	H7716	NAVY	HYD.	2
SHI	H2095	WIND TURBINE	ELEC.	1
SHI	H1763	FPSO	HYD.	1
HSHI	S736	FLOATING CRANE	ELEC.	1
DSME	H3601	DRILL SHIP	HYD.	20
DSME	H3507	DRILL SHIP	HYD.	5
DSME	H5906	DRILL SHIP	HYD.	2
SHI	G2	Floating dock	ELEC.	1
STX CORP.	HN758	Floating dock	ELEC.	1
DAEHAN	RD5	ROYAL DOCK	ELEC.	1
SHI	H2059	Working winch	ELEC.	3
SHI	IA140280	Working winch	ELEC.	1
VARO TULSEA	ATL2/8559	Floating dock	ELEC.	1
IHIMU	H1067	FLOATING CRANE	HYD.	2
SAMHO I&D	SH001	FLOATING CRANE	ELEC.	1
CHUNHAJI	JK601	FLOATING CRANE	ELEC.	1
TOTAL				53

BULK

SHIPYARD	HULL NO.	SHIP	TYPE	VESSEL
DSME	H1702	25K PC	ELEC.	1
HMD	2629	50K PC	HYD.	5
HMD	S460	50K PC	HYD.	2
STX	S1721	49K PC	HYD.	4
DAESUN	SB552	3.5K PC	HYD.	2
DAESUN	SB574	12K PC	HYD.	2
DAESUN	SB586	3.5K PC	HYD.	4
HHI	2947	325K VLOC	HYD.	3
HHI	3000	325K VLOC	HYD.	15
SPP	H4069	35K BC	HYD.	6
HANTONG	HT120	64K BC	HYD.	2
HSHI	S699	250K BC	HYD.	4
SAMJIN	H1051	58K BC	HYD.	1
TOTAL				51

TOTAL : 288 vessels

TANKER

SHIPYARD	HULL NO.	SHIP	TYPE	VESSEL
SHI	SN2214	157K COT	HYD.	3
SSME	S1208	150K COT	HYD.	2
SSME	S2041	158K COT	HYD.	3
HHIC	N247	150K COT	HYD.	5
HHI	2744	300K VLCC	HYD.	3
DSME	H5444	300K VLCC	HYD.	27
TOTAL				43

LNG/LPG

SHIPYARD	HULL NO.	SHIP	TYPE	VESSEL
DSME	H2402	173K LNG-FSRU	HYD.	1
SHI	SN2233	7.5K LNG C	HYD.	2
HMD	S8178	38K LPGC	HYD.	4
HHIC	P100	38K LPGC	HYD.	8
TOTAL				15

CHAIN STOPPER

SHIPYARD	HULL NO.	SHIP	TYPE	VESSEL
HHI	2842	19,200 TEU Ø132	ELEC.	2
HHI	2855	14,400 TEU Ø121	ELEC.	17
SHI	H2092	16,000 TEU Ø132	ELEC.	3
DSME	H4161	16,000TEU Ø132	ELEC.	3
DSME	H4250	18,330 TEU Ø137	ELEC.	20
DSME	H4277	18,000 TEU Ø132	ELEC.	6
DSME	H4296	10,600 TEU Ø132	ELEC.	3
DSME	H2418	Yamal LNG Ø111	HYD.	15
DMHI	H4082	5,400TEU Ø95	ELEC.	6
TOTAL				75

ELECTRIC DECK MACHINERY

Feature

- Electrical power AC380/440V, 50/60Hz
- Flange mounted electric motor with protection IP 56 grade.
- Electric motor equipped with space heater, fail safe electric brake.

Benefits

- No environmental pollution
- Low life cycle cost
- Short start up time in cold temperature
- Low power consumption
- Low noise



Function

- Speed step selected by control lever
- High light line speed
- Inching controller for easy clutching
- Anchor in protection against shock

Option

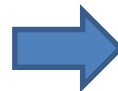
- Automatic tension mooring
- Shiplside remote control
- Tension indicator
- Chain length indicator
- Hydraulic operated anchor speed limiter
- Automatic anchor drop
- Explosion proof motor



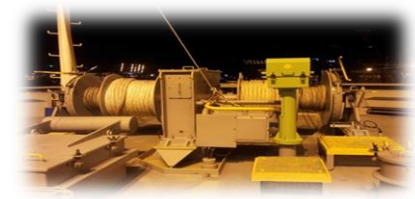
<Electric panel>



<Inverter>



<Inverter motor>



<Winch>

Capacity

- Windlass chain diameter : 22mm ~ 147mm
- Mooring winch rated load : 3 ~ 45 ton (other size on request)
- Electric starter panel : 25kw ~ 210kw (other size on request)
- Local control stand : Single / Double / Triple
- Remote control stand : Single / Double / Triple

Frequency controlled drive

- Easy and smooth operation with stepless speed control
- Smooth sequencing operation in starter panel
- Used in all environmental condition
- One power cable

HYDRAULIC DECK MACHINERY

Feature

- Electrical power AC380/440V, 50/60Hz
- Flange mounted hydraulic motor with protection IP 56 grade.
- Electric motor, fail safe hydraulic brake.

Benefits

- No environmental pollution
- Low life cycle cost
- Low power consumption
- Easy maintenance



Function

- Speed step selected by control lever
- High light line speed

Option

- Automatic tension mooring
- Shiplside remote control
- Tension indicator
- Chain length indicator
- Hydraulic operated anchor speed limiter
- Automatic anchor drop
- Ice class



<Hydraulic panel>



<Hydraulic Power Unit>



<Control block>



<Hydraulic motor>



<Winch>

Capacity

- Windlass chain diameter : 22mm ~ 147mm
- Mooring winch rated load : 3 ~ 45 ton (other size on request)
- Hydraulic Power Pack Unit : All mounted
- Remote control stand : Single / Double / Triple

CHAIN COMPRESSOR

Feature

- > Chain Diameter ~147mm (other size on request)
- > MBL of Chain ~6,690 kN (other size on request)
- > Lashing Method Hydraulic Cylinder Operated

Function

- > Hydraulic hand pump can move the dog up and down
- > Wrap a lashing chain



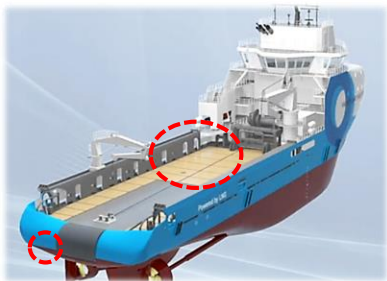
Components

- > Connecting link
- > Master link
- > Turn buckle
- > Safety pin protection against separation

Option

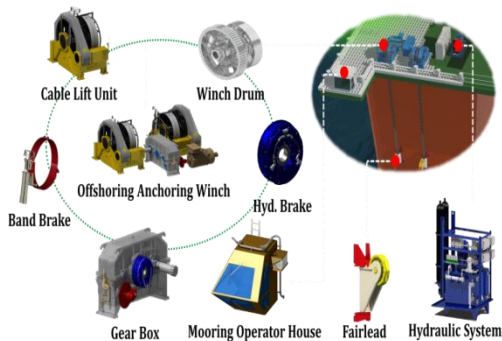
- > Hydraulic controller can be used to control the Lashing chain and the Dog
- > Operate at -52° (Yamal chain stopper)

■ ANCHOR HANDLING AND TOWING SYSTEM

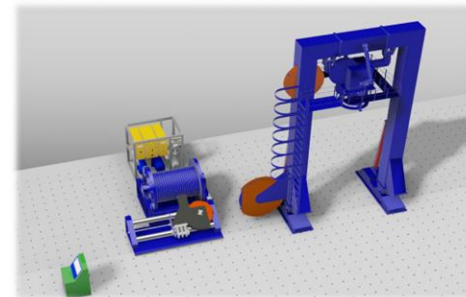


<Anchor handling tug supply vessel>

■ SEMI-RIG 8 POINT MOORING SYSTEM



■ ROV LARS



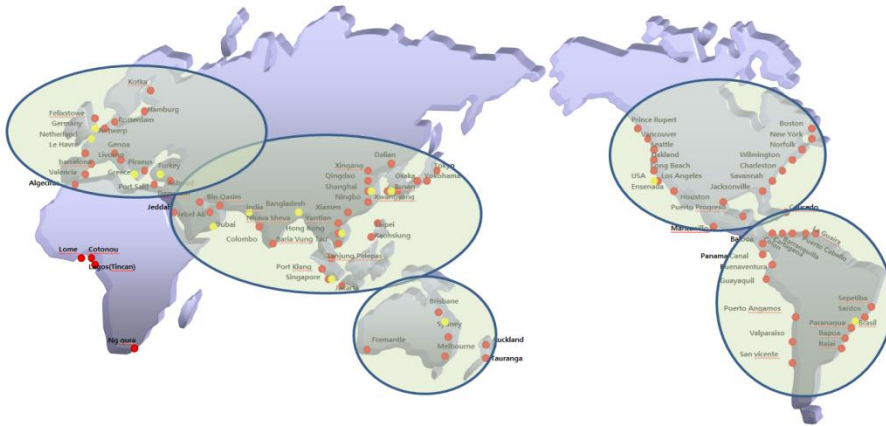
Model	Line pull / 1st layer	Drum capacity	Brake holding / 1st layer
MWAT 200	200 tons	1,200m of 64mm dia.	280 tons
MWAT 300	300 tons	2,200m of 74mm dia.	390 tons
MWAT 400	400 tons	4,700m of 87mm dia.	520 tons

- > Chain dia. : 84mm(R4)
- > Brake holding capacity : 735 ton
- > Speed : 9m/min
- > Nominal Pull : 300 ton
- > Maximum Pull : 350 ton
- > Dynamic brake capacity : 2,500 kgf.m

- > Drum Capacity : 0 ~ 3,000 m
- > S.W.L : 0 ~ 15, 30, 40~50 ton
- > Speed : 0 ~ 30 m/min
- > Operating pressure : 210 bar

Model	Shark jaw/Towing pin capacity
MST 300	Shark jaw 300 t & Tow pin 240 t
MST 400	Shark jaw 400 t & Tow pin 300 t
MST 600	Shark jaw 600 t & Tow pin 600 t

A/S NETWORK



Korea-MIRAE INDUSTRIES CO.,LTD
135-1, Daechi, Chilseo, Haman, Kyungnam, Korea
Tel: +82-55-587-8520
admin@miraewinch.com
www.miraewinch.com



Netherland-RAVEBO
P.O. Box 280 3230 AG Brielle t Woud 2 3232 LN
Briell Netherlands
Tel: +31-181-412 757
marine@ravebo.nl
www.scandiesel.it



Netherland-Wetering Rotterdam
Bunschotenweg 134 3089 KC Rotterdam Harbour no.:2696
Tel: 31(0)10-494-39-40
j.vanwoerkom@weteringrotterdam.com



India-Subhag Synergies
425/75, T. M. V. Colony, Gultekdi, Pune - 411 037
Tel: 91-20-2439-3674
sanjeev@subhagmail.com



New Top-Star
Mouchak Tower, 4th Floor, Suite-508, #83/B Siddeswari Road
Dhaka 1217 Bangladesh
Tel: +88-01677523918
newtopstar.mannan@yahoo.com



Singapore-Dae yang Engineering PTE
13, Tuas Avenue 18A, Singapore 638861
Tel: 65-6268-6113
hwpark@daeyang.com.sg



Singapore-ASIAN Star
101 Cecil Street, #22-02 Tong Eng Building, Singapore 069533
Tel: 65-6223-9920
astarship@astarship.com.sg



Singapore-Sinco Holding Pte Ltd
64 Tuas South Street 5 Singapore 637803
Tel: 65-6897-7368
low@sincoautomation.com



Greece-Reina Marine LTD.
14 Ag.Sofias & 2 Prousis Str. Nea Smyrni- 17123 P.O Box 76346-171 02
Tel: 30-210-9349722
safety@reinamarine.gr



China-Yuanyang Maritime
B/13th Floor, Building B, No.1081-1089 Pudong Avenue, Shanghai, 200135, China
Tel: 86 21 6855 3315
yuanyangmaritime@yahoo.com.cn



USA-Kormarine
312 W. Sunnaerfield cir. Anaheim, California 92802, USA
Tel: + 1-310-708-6095
joon.an@kormarines.com



Turkey-Adamar INT Ship supply
Kazimdirik Mah., 283 Sk., No. 15 Kat:3, Daire:4 Aliaga,Izmir 35800
Turkey
Tel: 90 232 6161719
adamarine@adamarine.com



Hongkong&Taiwan-MTS
Rm702A Fortress Tower, 250 King's Road, Hong Kong
Tel: 852-2571-9322
info@marland.com.hk



Brasil-Metalock
Rua Visconde do Rio Branco, 20/26 11013-030 - Santos -SP
Tel: 55-13-3226-4686
santos@metalock.com.br



U.A.E-Saifee Group (J.O.M.E)
P.O.BOX 3316, Dubai, U.A.E
Tel: 971-4-222-5527
ste52@emirates.net.ae



Germany-Bopp GmbH
Van-Heukelum-StraBe 14, Germany
Tel: 49-471-700-588-2
info@bopp-gmbh.com



UNILIFT EQUIPMENT & SALES
9 ASTILL DRIVE, Narrambla Business Park, Orange NSW 2800
Tel: 02-6360-3311
iken@uniliftequipment.com.au